

www.sandcreekcompletestreets.com

WELCOME

SAND CREEK ROAD COMPLETE STREETS STUDY

PUBLIC INPUT SESSION #1

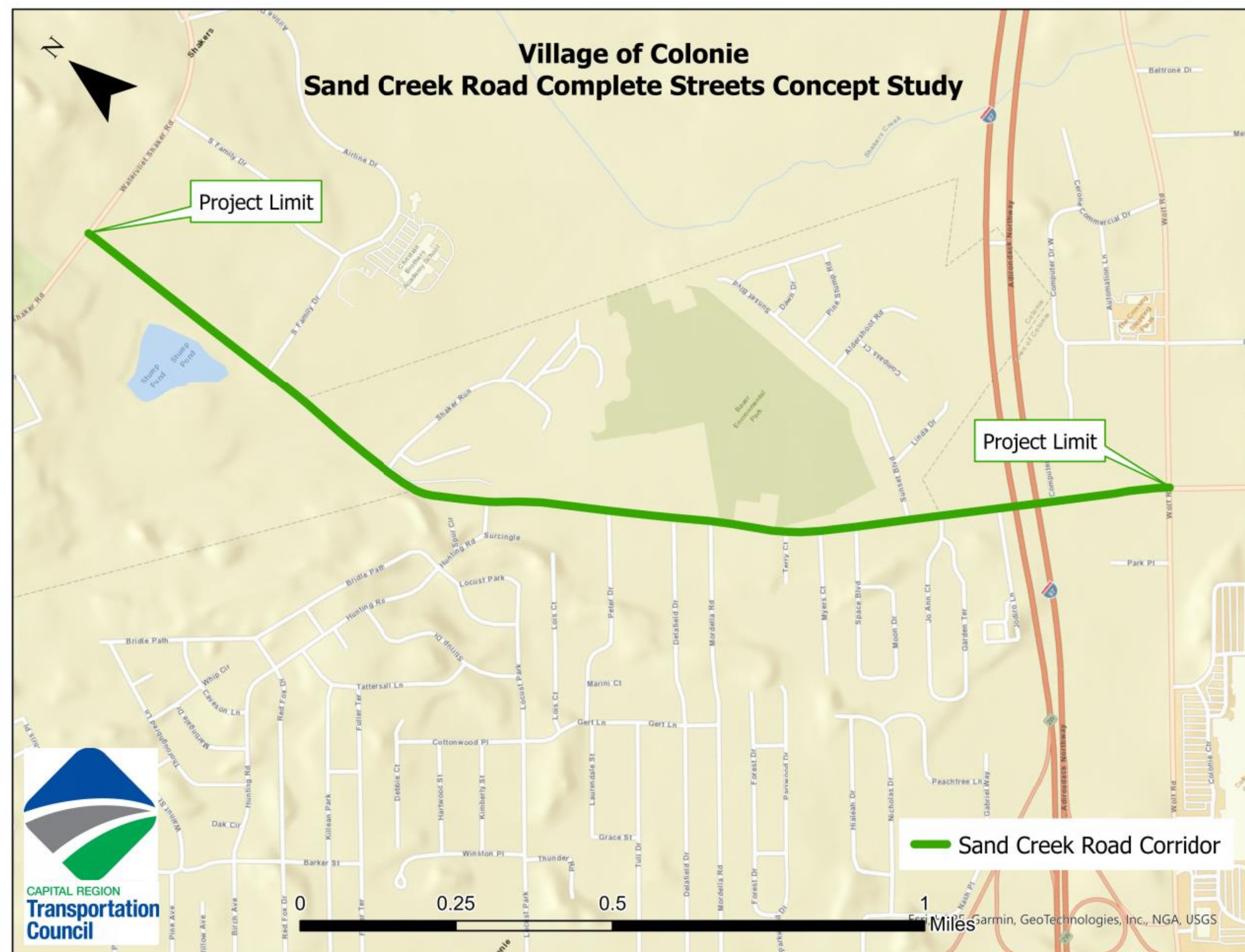


SAND CREEK ROAD

COMPLETE STREETS STUDY

SAND CREEK ROAD CORRIDOR VISION

Located within the Village of Colonie, the Sand Creek Road corridor provides critical connections to key community destinations, commercial activity, employment centers, recreational areas, regional transportation hubs, and residential neighborhoods. Implementing complete streets concepts along Sand Creek Road will create a more accessible corridor that serves to enhance the vibrancy and livability of the area for residents and visitors of all abilities while also accommodating future growth in vehicular traffic and development.



PURPOSE & NEED

Sand Creek Road is a critical transportation link in the Village and Town of Colonie that is lacking in pedestrian, bicycle, and transit facilities. Pedestrian accommodations are available on limited segments along the north side of the Sand Creek Road, and there is no dedicated bicycle infrastructure along the corridor. During the pandemic, there was an increase in bicycle and pedestrian traffic along the corridor, particularly due to increased use of recreational destinations like Bauer Park, and growth in nearby developments, including the Albany International Airport. Unfortunately, the lack of infrastructure for active transportation modes has created safety concerns for Village and Town residents. The study will develop a plan to implement a Complete Street that is safe and convenient for travel by all modes of transportation by promoting elements that can reduce vehicular speed and congestion, improve safety for bicyclists and pedestrians, and encourage economic growth in the study area.

SAND CREEK ROAD CORRIDOR

STUDY LIMITS



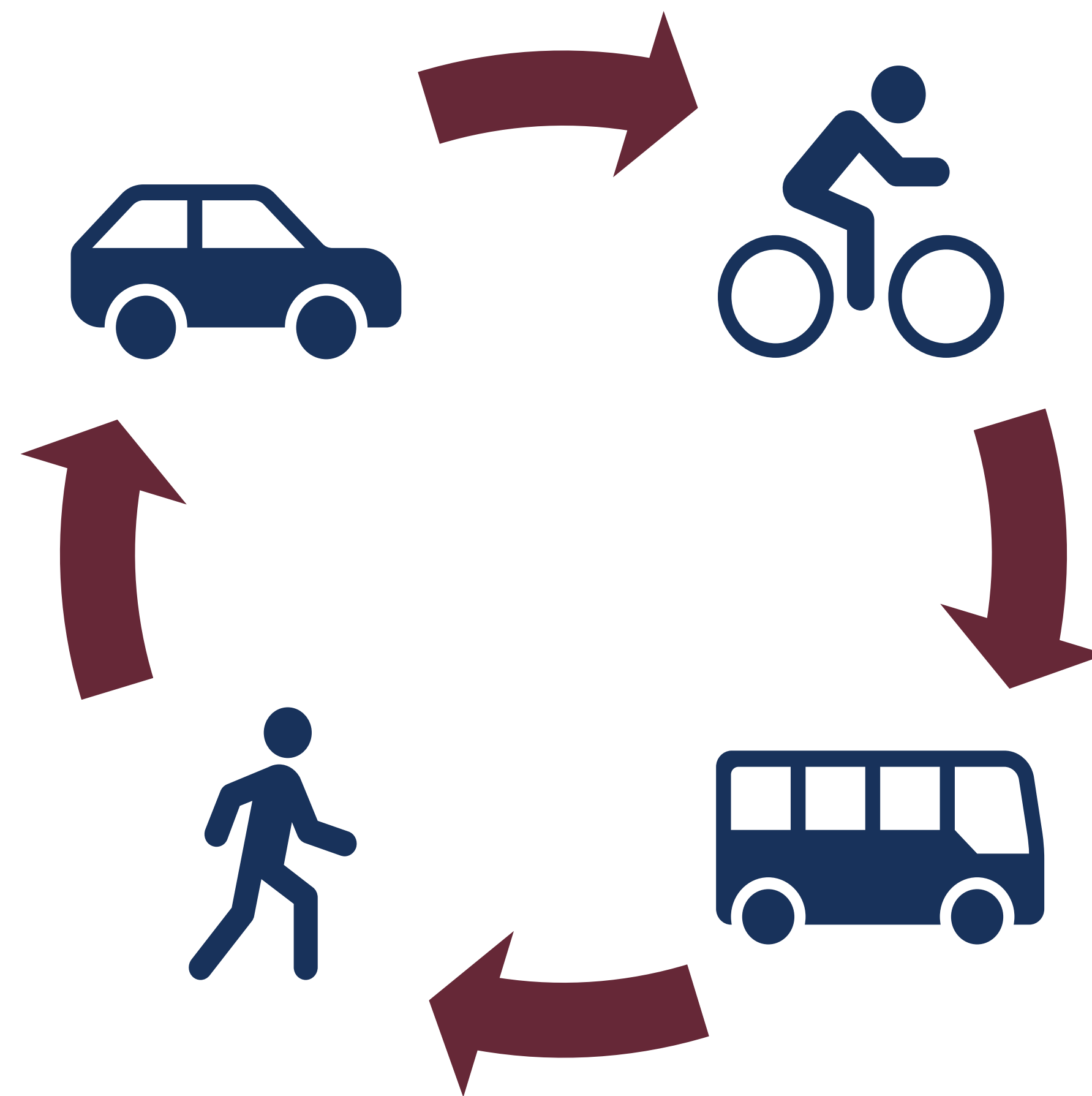
WHAT IS A COMPLETE STREET?



Route 11, Canton

Complete Streets are streets designed for all users, all modes of transportation, and all ability levels. They balance the needs of drivers, pedestrians, bicyclists, transit riders, emergency responders, and goods movement based on local context.

- Capital District Complete Streets Design Guide



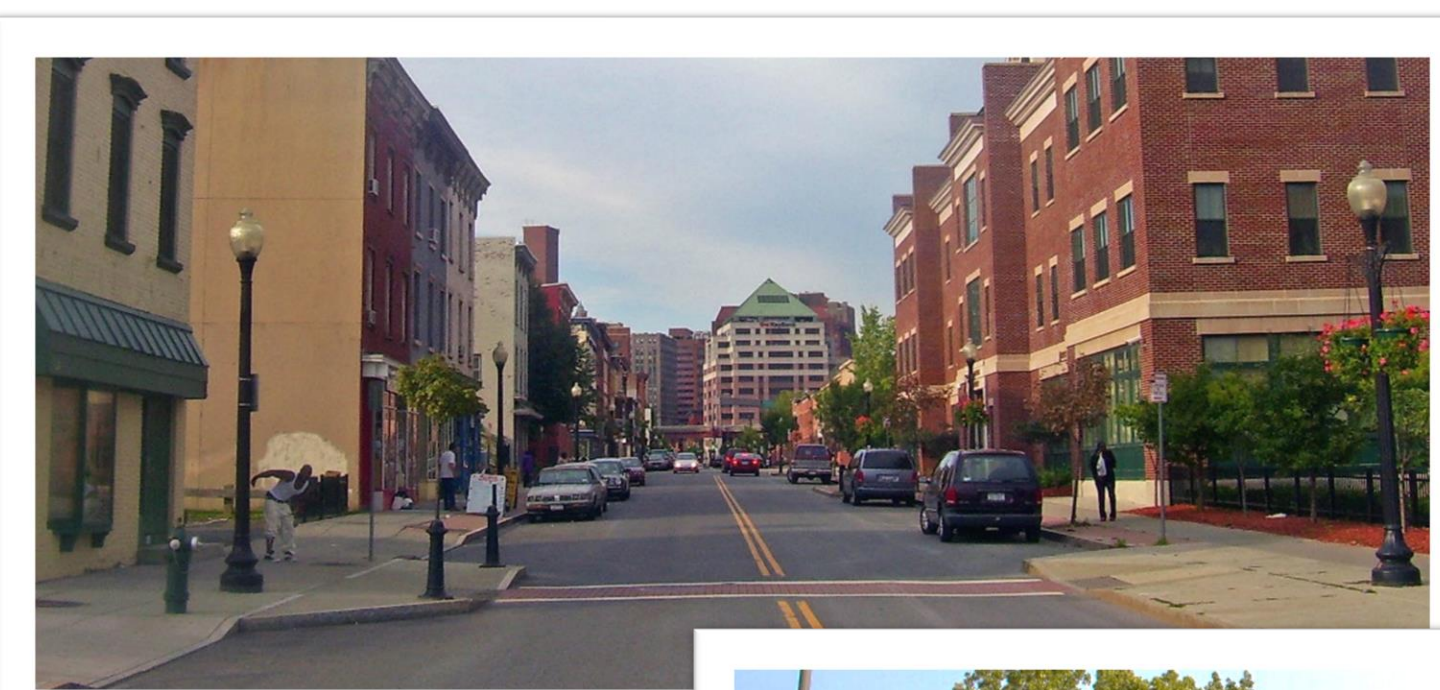
Route 347, Port Jefferson

Best Practices for Complete Streets, NYSDOT

Best Practices for Complete Streets, NYSDOT

EXAMPLES OF COMPLETE STREETS

Pedestrians



curb extensions

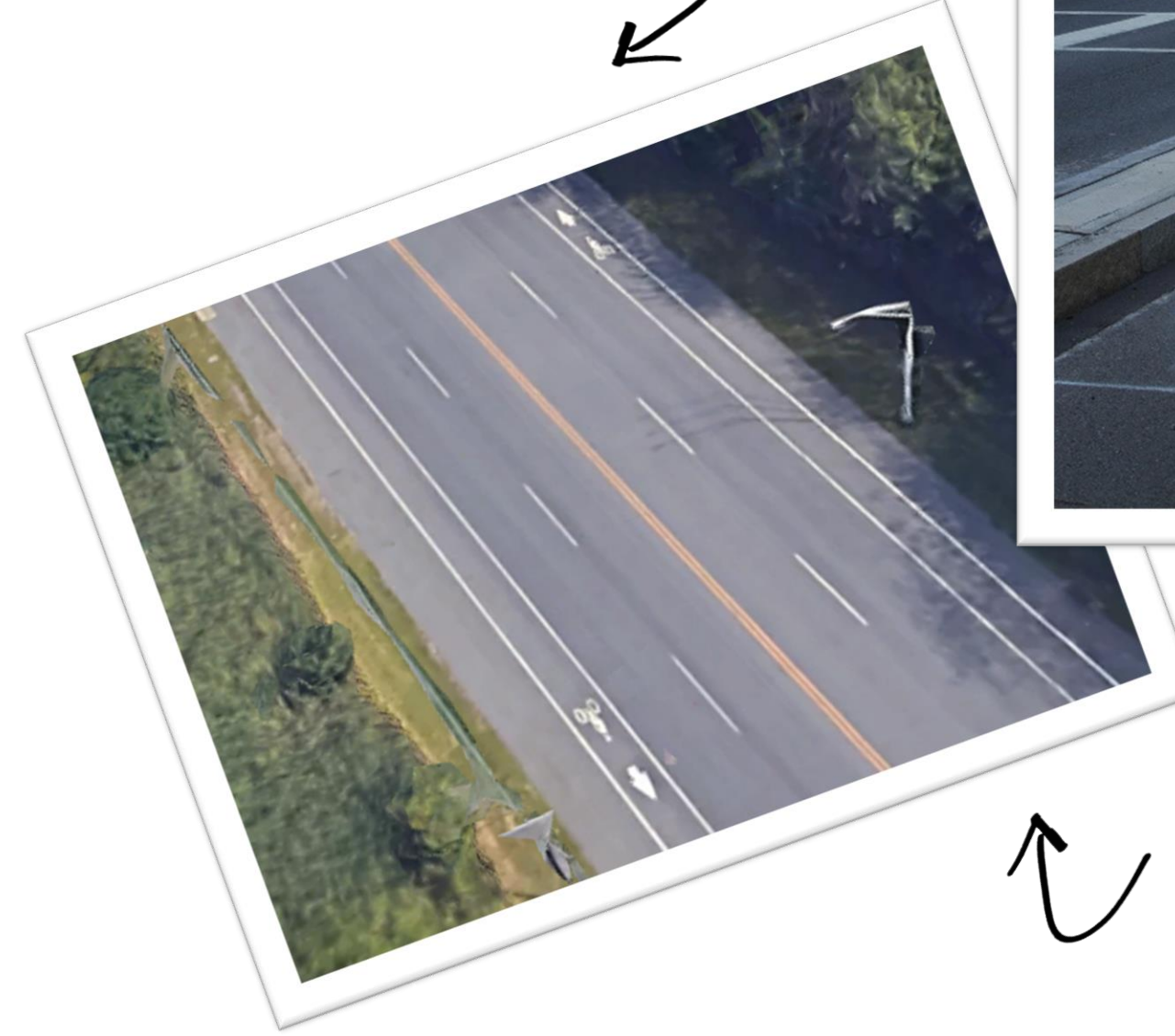
crosswalks & median refuges



pedestrian signals

Bicyclists

wide shoulders



bike lanes



"share the road" signs



Transit



bus pulloffs & pedestrian access to bus stops

Traffic Calming

raised crosswalks & ramps



Safety Enhancements



street & sidewalk lighting

SAND CREEK ROAD CORRIDOR

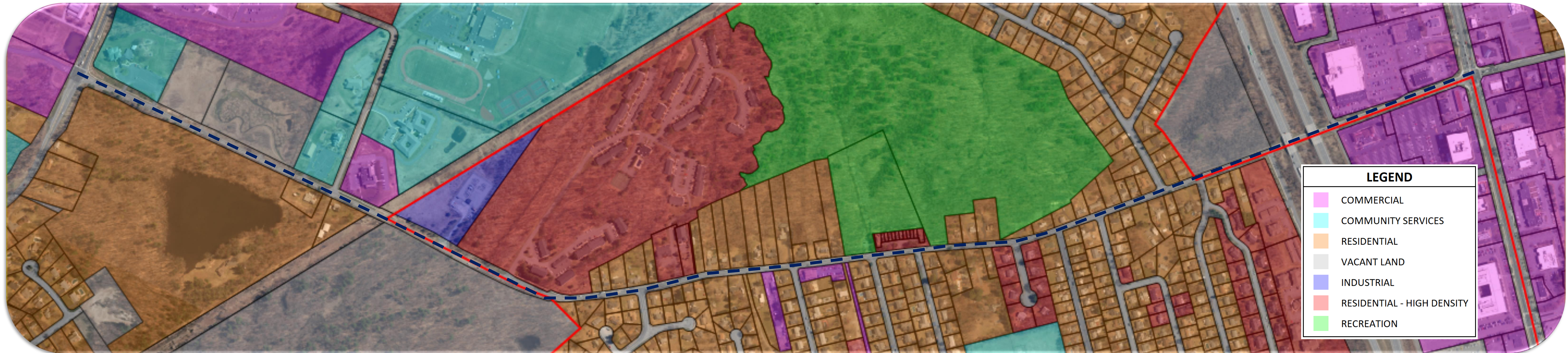
KEY PROJECT MILESTONES



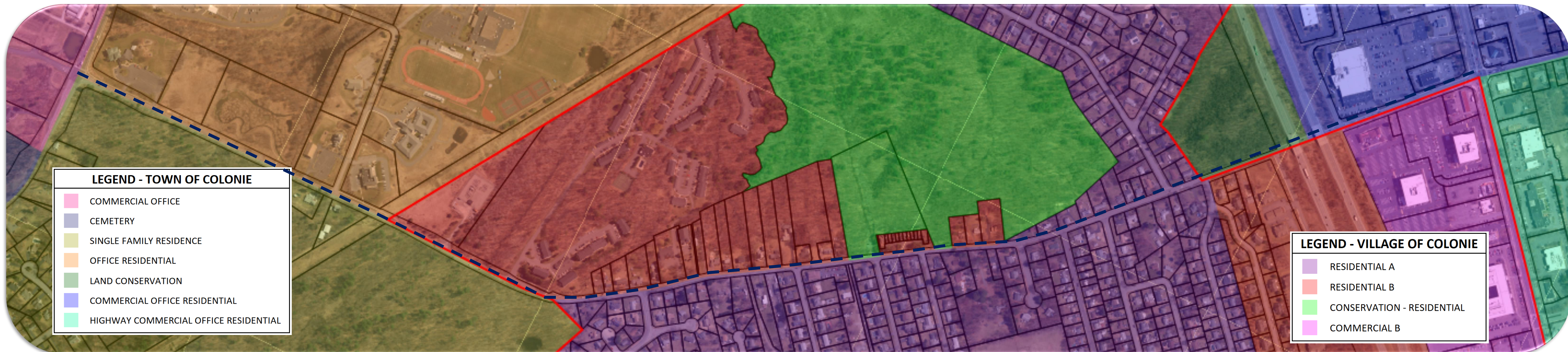
SAND CREEK ROAD CORRIDOR

LAND USE AND ZONING

LAND USE

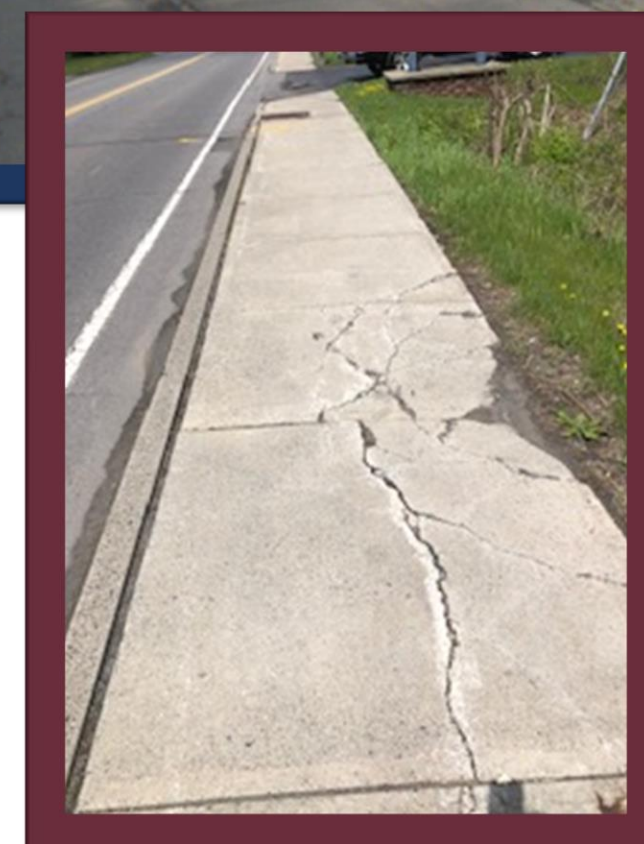


EXISTING ZONING



SAND CREEK ROAD CORRIDOR

PEDESTRIAN FACILITIES



SAND CREEK ROAD CORRIDOR

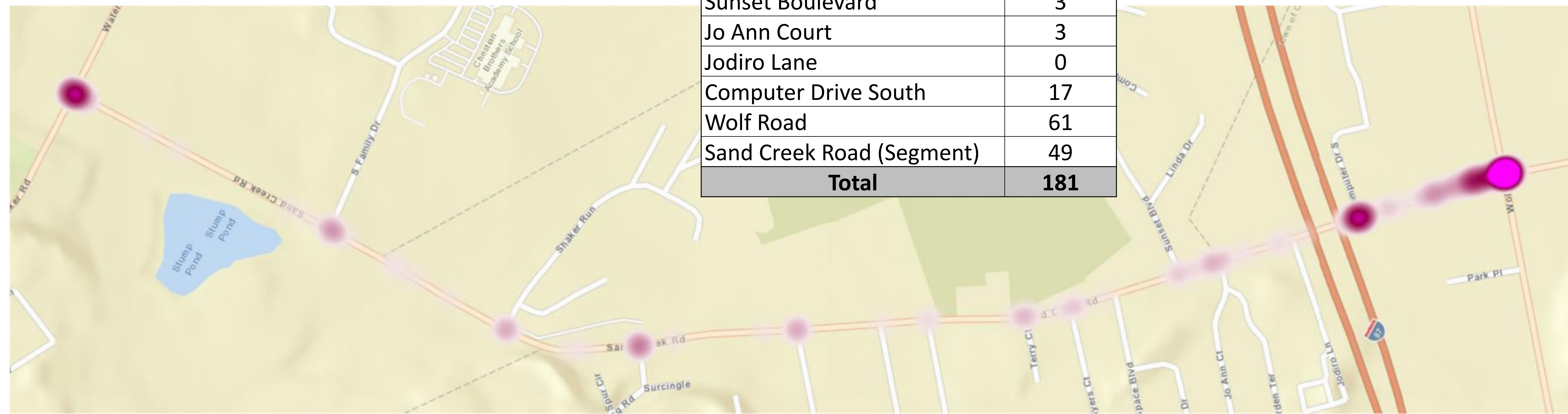
CRASH HISTORY

The most recent five (5) years of available data was reviewed, from August 1, 2017 to July 31, 2022.

During this five-year period, 181 crashes were recorded. 132 of these crashes occurred at an intersection along the corridor.

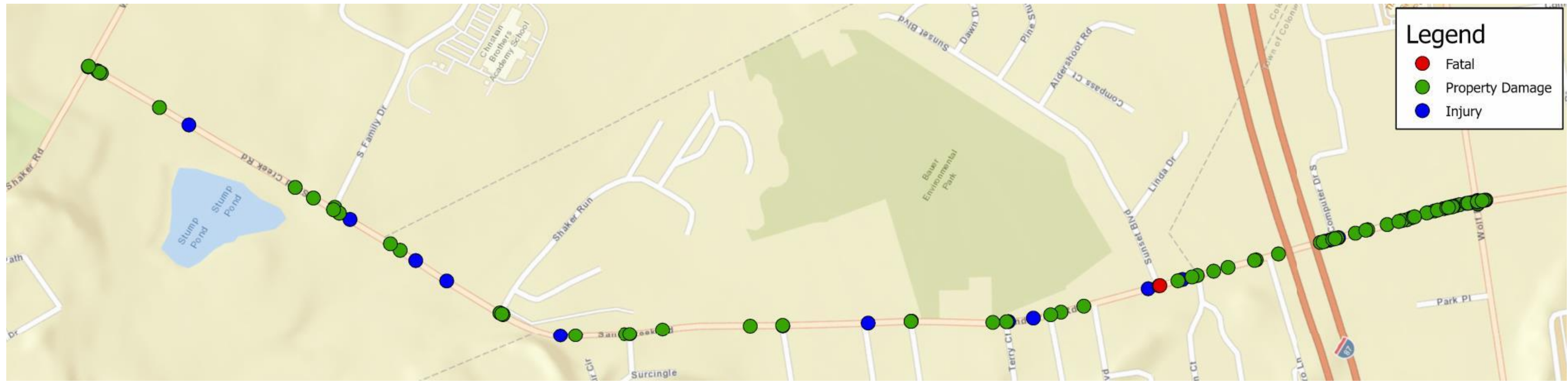
Collision Location	
Intersecting Roadway	Quantity
Watervliet Shaker Road	18
South Family Drive	5
Shaker Run	4
Hunting Road	6
Peter Drive	4
Delafield Drive	1
Mordella Road	2
Terry Court	4
Myers Court	3
Space Boulevard	1
Sunset Boulevard	3
Jo Ann Court	3
Jodiro Lane	0
Computer Drive South	17
Wolf Road	61
Sand Creek Road (Segment)	49
Total	181

Collision Type Summary	
Collision Category Type	Quantity
Head On	1
Left Turn (Against Other Car)	14
Overtaking	8
Rear End	75
Right Angle	27
Right Turn	5
Sideswipe	6
Unknown	3
Other	42
Total	181



SAND CREEK ROAD CORRIDOR

CRASH HISTORY



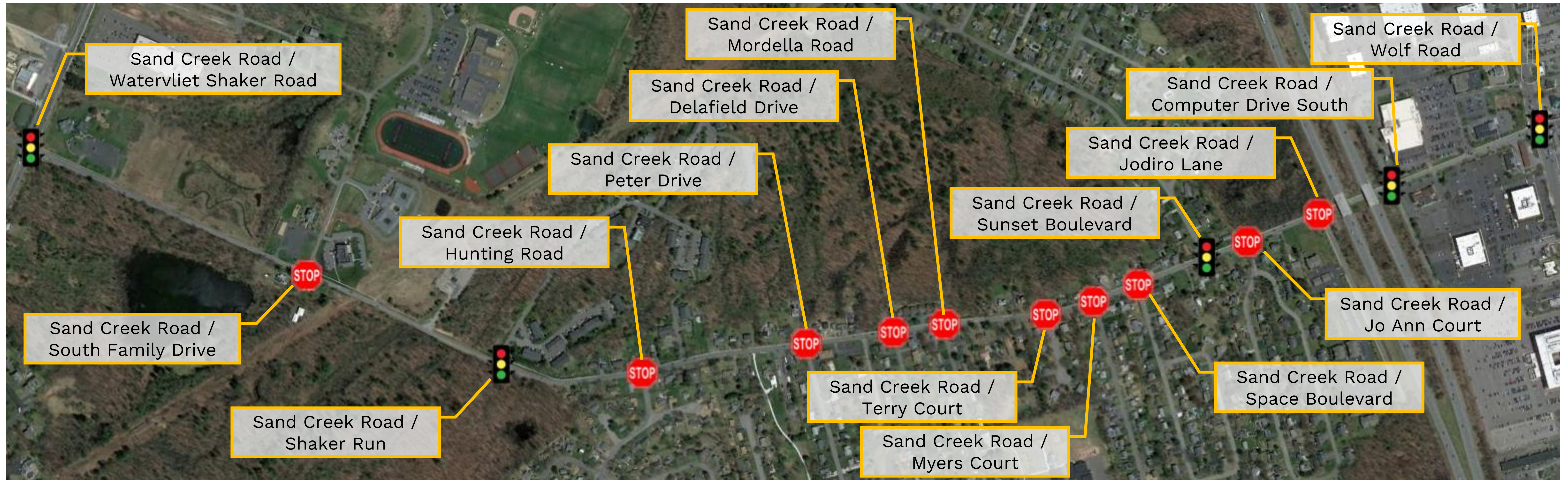
Crash Severity Summary	
Crash Severity Type	Quantity
Property Damage	134
Injury	46
Fatality	1
Total	181

Collision Type Summary	
Collision Type	Quantity
Collision with Animal	7
Collision with Bicyclist	1
Collision with Motor Vehicle	146
Collision with Pedestrian	7
Collision with Fixed Object	16
Overtaken	2
Left Roadway Only	2
Total	181

Esri, HERE, Garmin, INCREMENT P, Intermap, NGA, USGS

SAND CREEK ROAD CORRIDOR

INTERSECTIONS



Signals Owned & Operated by the NYS DOT

Sand Creek Road & Watervliet Shaker Road

Sand Creek Road & Wolf Road

Signals Owned & Operated by the Village of Colonie

Sand Creek Road & Shaker Run

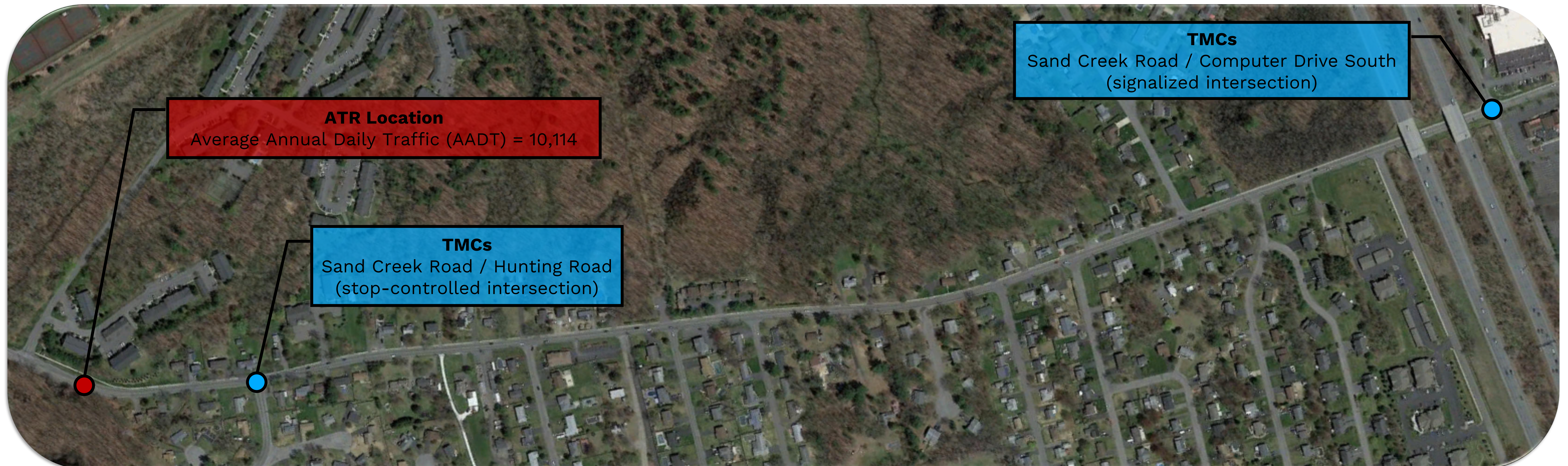
Sand Creek Road & Sunset Boulevard

Signals Owned & Operated by the Town of Colonie

Sand Creek Road & Computer Drive South

SAND CREEK ROAD CORRIDOR

TRAFFIC DATA COLLECTION



ATR Location
Average Annual Daily Traffic (AADT) = 10,114

TMCs
Sand Creek Road / Hunting Road
(stop-controlled intersection)

TMCs
Sand Creek Road / Computer Drive South
(signalized intersection)

The **Automatic Traffic Recorder (ATR)** Data was collected over a 72-hour period from Tuesday, February 14th to Thursday, February 16th.

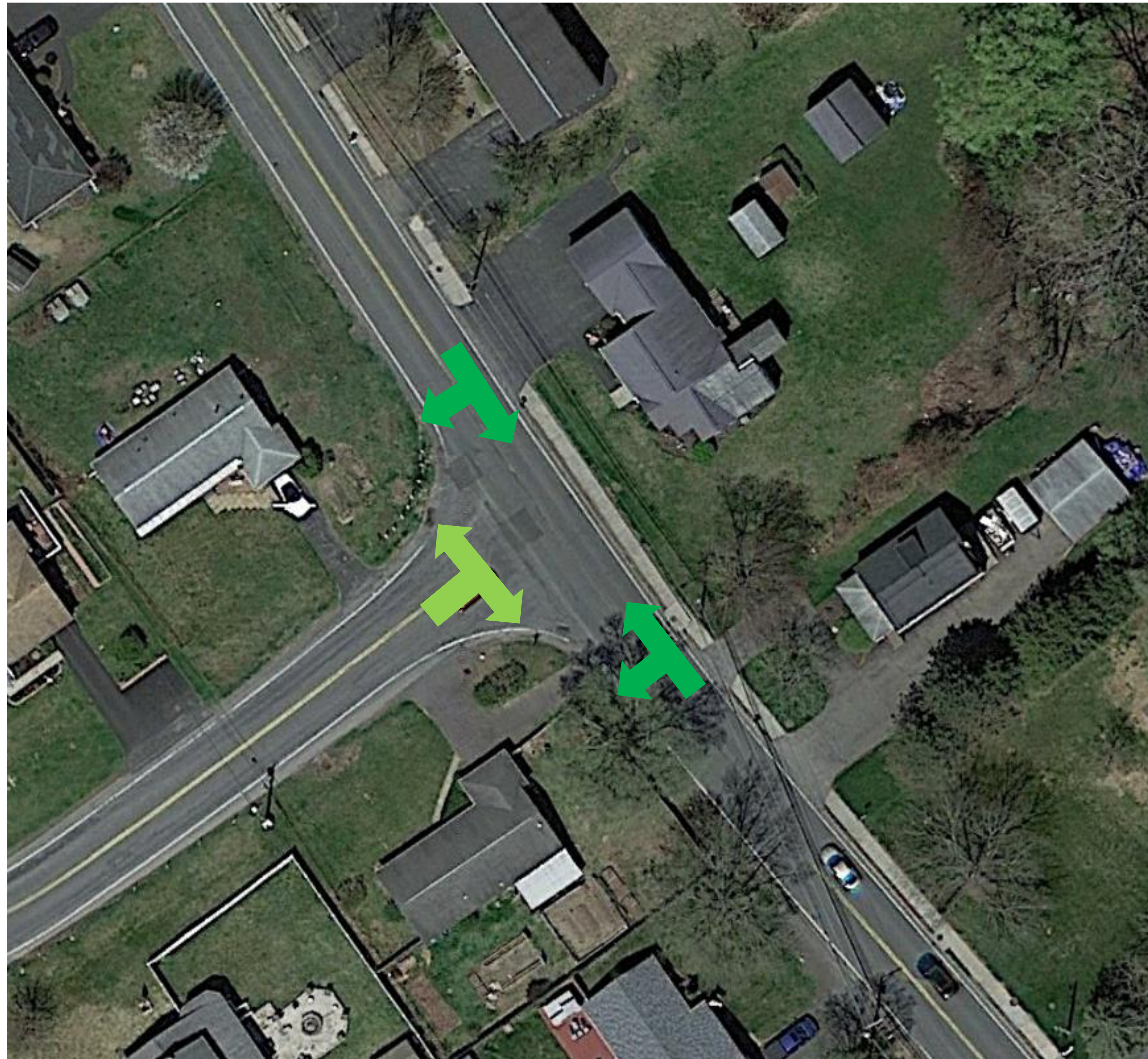
The **Turning Movement Counts (TMCs)** were performed during the morning and afternoon peak traffic times, 8 – 10 am & 5 – 7 pm, on Tuesday, March 7th.

TMCs are used to determine intersection Level of Service (LOS). The LOS defines how well traffic flows through an intersection based on a letter grading system.

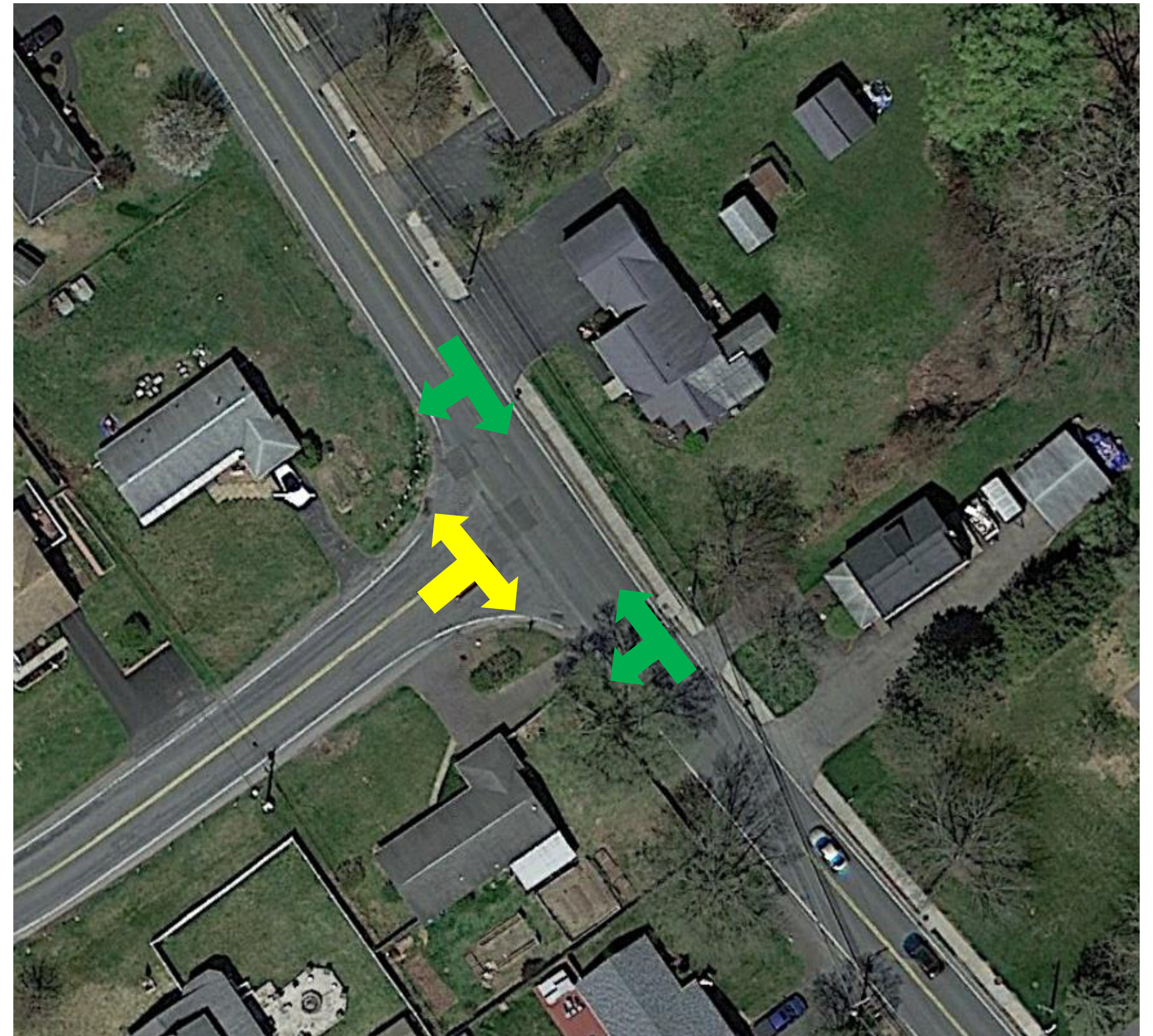
- | | |
|---------------|----------------|
| A = Excellent | D = Acceptable |
| B = Great | E = Poor |
| C = Good | F = Failing |

SAND CREEK ROAD CORRIDOR

TRAFFIC DATA ANALYSIS



AM Peak



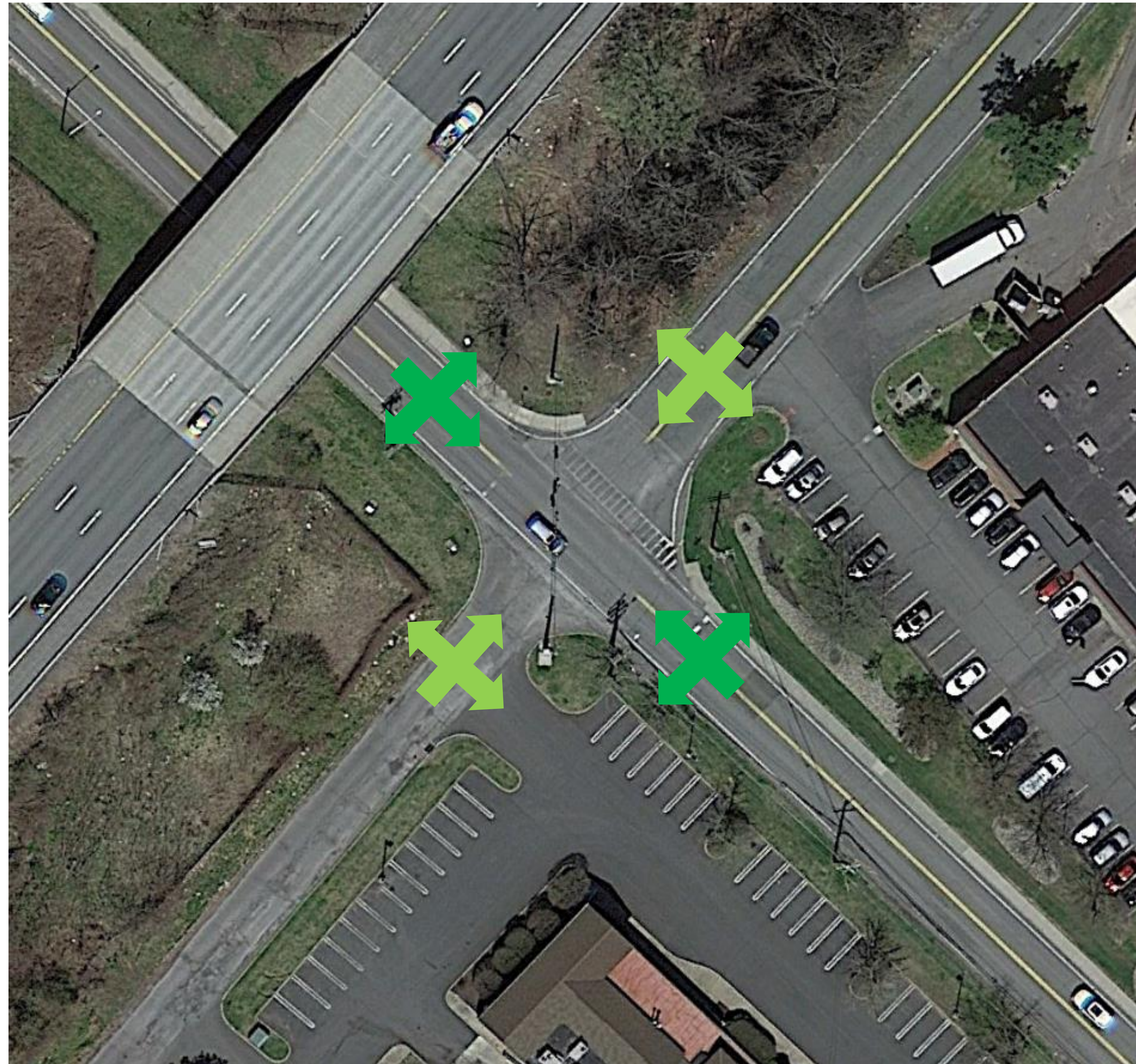
PM Peak

- A = Excellent
- B = Great
- C = Good
- D = Acceptable
- E = Poor
- F = Failing

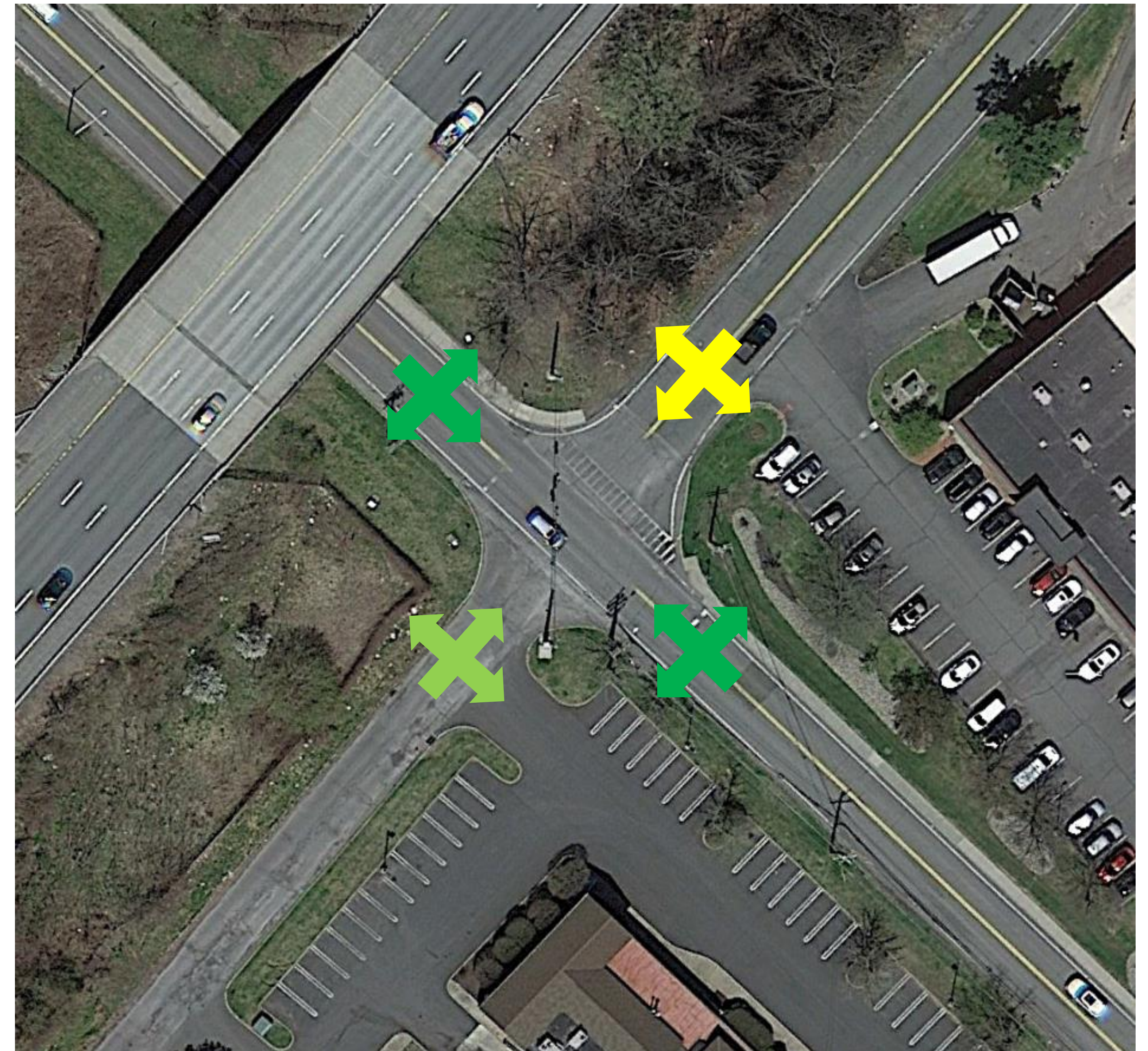
Sand Creek Road & Hunting Road LOS

SAND CREEK ROAD CORRIDOR

TRAFFIC DATA ANALYSIS



AM Peak



PM Peak

- A = Excellent
- B = Great
- C = Good
- D = Acceptable
- E = Poor
- F = Failing

Sand Creek Road & Computer Drive South LOS

SAND CREEK ROAD CORRIDOR

OBSERVED SITE CONDITIONS

Sand Creek Road / Computer Drive South Intersection



The push button to cross Computer Drive South does not work.

There are no crosswalks across Sand Creek Road.

There are significant traffic delays when vehicles are trying to turn left.

Trucks over 4 tons are not permitted on Sand Creek Road.



Sand Creek Road / Delafield Drive Intersection & Bauer Park



Vehicles attempting to turn into the daycare cause delays.

There is not much available right-of-way at this end.



A midblock crossing is needed here to connect the neighborhoods to the park.

It is hard to turn left onto Sand Creek Road during peak times.

SAND CREEK ROAD CORRIDOR

OBSERVED SITE CONDITIONS

Sand Creek Road from Shaker Run to Hunting Road



Bollards were installed at the corner of Hunting Road after a car crashed into the house.

Several accidents have occurred in the past where the road bends at the Village Sign.

Truck traffic and speeding are issues along the corridor.

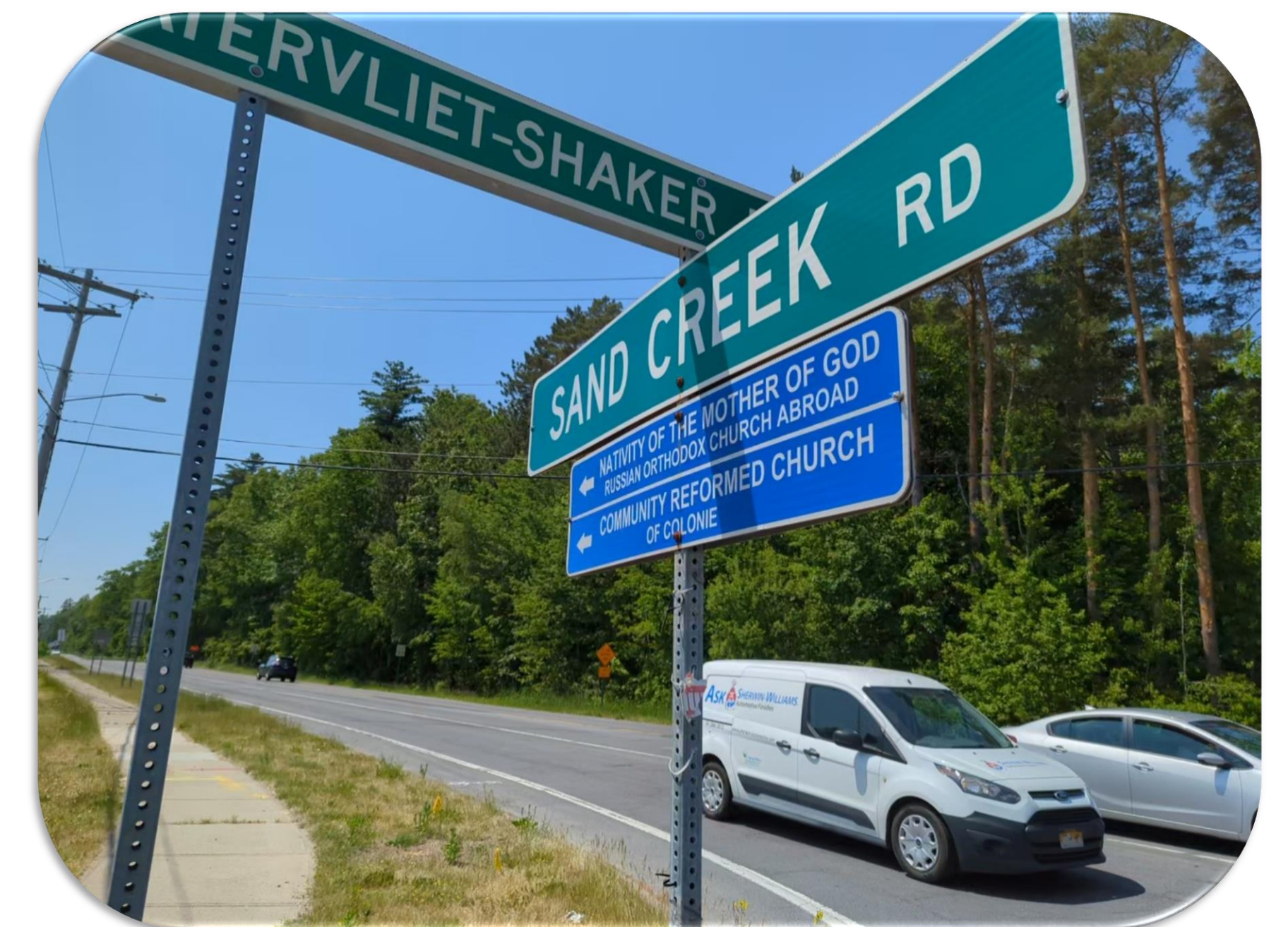
There is a park proposed on the vacant lot across from Shaker Run.



Sand Creek Road / Watervliet Shaker Road Intersection

A bicycle path is currently being constructed along Watervliet Shaker Road, ending at this intersection.

A bicycle connection to Wolf Road would be beneficial.



There is more available right-of-way at this end of the study than the southern end.

There are substantial wetlands on the west side of Sand Creek Road.

